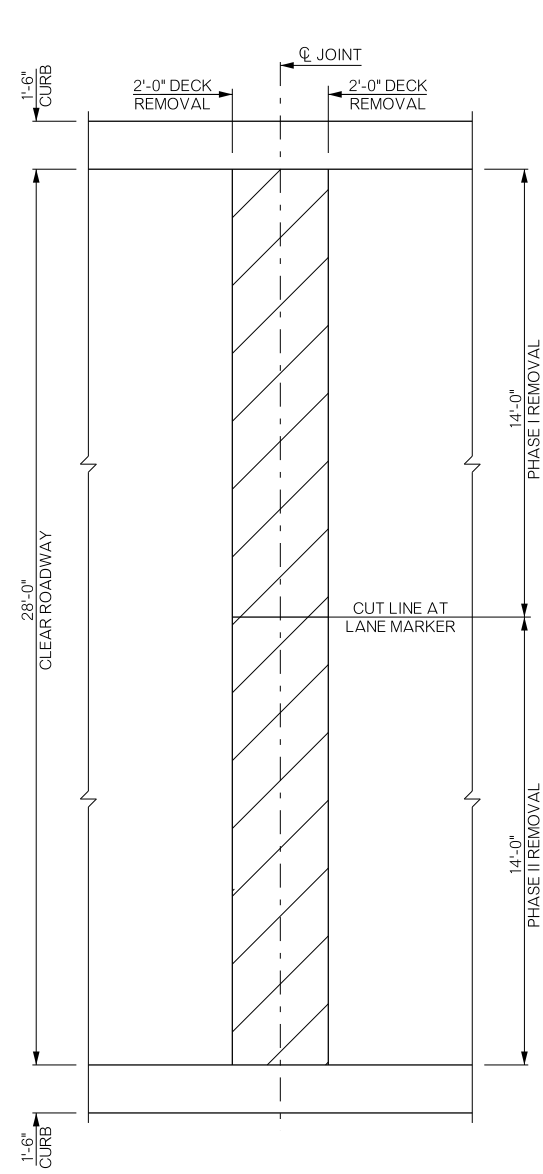
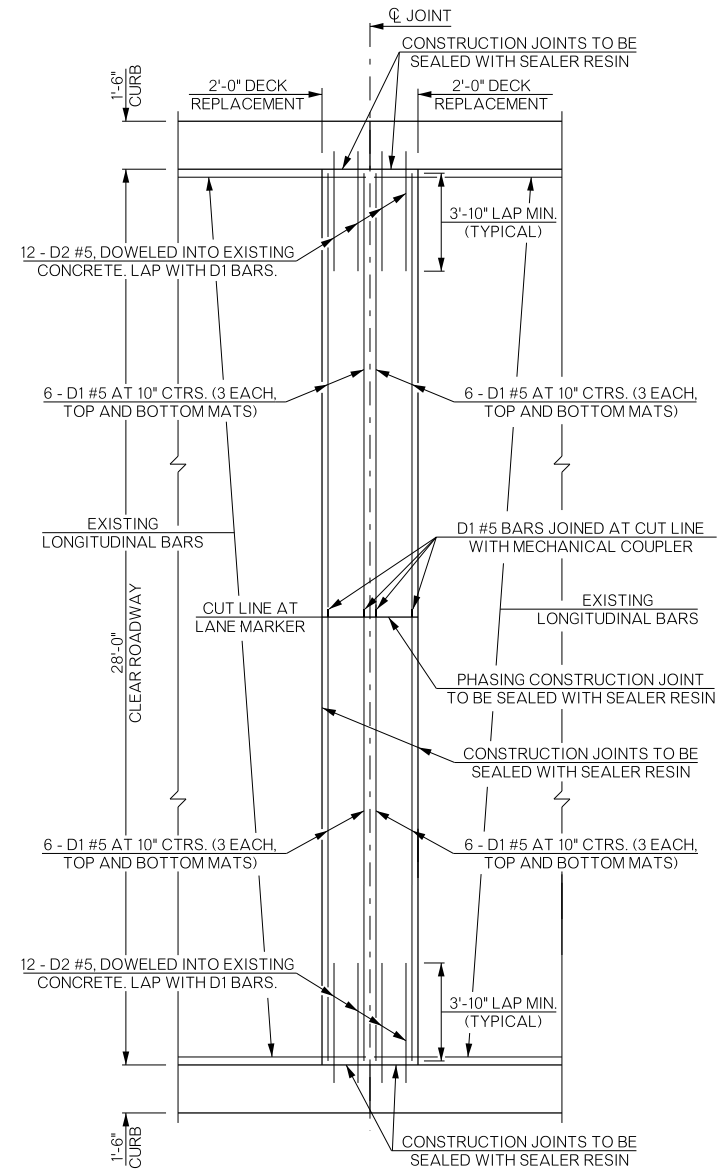


REVISIONS		
REV. NO.	DESCRIPTION	DATE



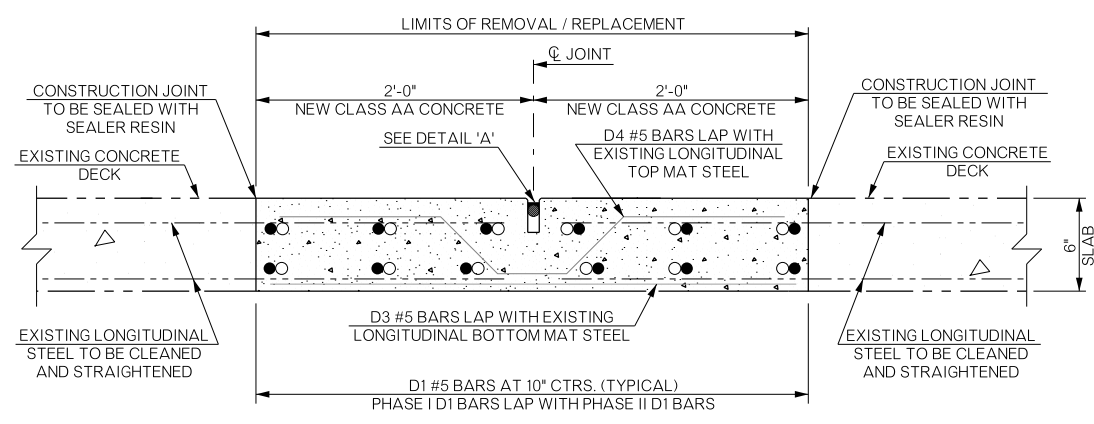
DETAIL OF DECK REMOVAL AT CONSTRUCTION JOINT

THE CONTRACTOR SHALL AVOID CUTTING INTO STRUCTURAL STEEL BENEATH BRIDGE DECK DURING SAWING.

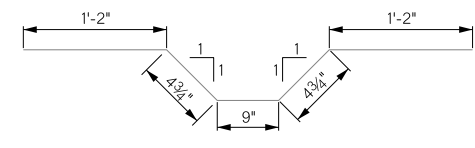


DETAIL OF DECK REPAIR AT CONSTRUCTION JOINT

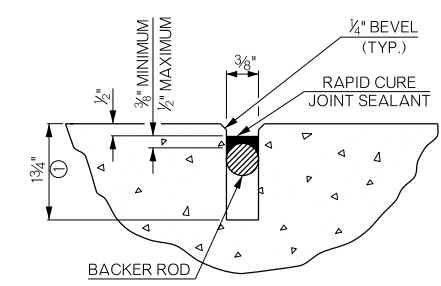
NOTE: D3 AND D4 BARS NOT SHOWN FOR CLARITY.



TYPICAL SECTION OF REHABILITATED CONSTRUCTION JOINT

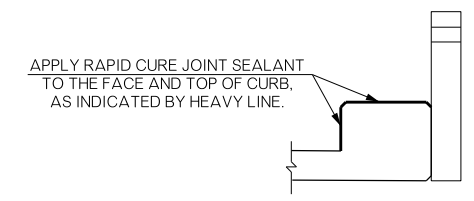


D4 #5 X 3'-10 1/2\"



DETAIL 'A'

① SAW TO THE DEPTH SHOWN TO PROVIDE CLEAN, STRAIGHT SURFACES.



REHABILITATED CONSTRUCTION JOINT AT CURB

BAR LIST ONE JOINT REPAIR (PHASE I) (1 REQUIRED FOR BRIDGE)				
MARK	NO.	SIZE	FORM	LENGTH
EPOXY COATED				
D1	12	#5	STR.	13'-10"
D2	12	#5	STR.	5'-0"
D3	11	#5	STR.	3'-8"
D4	10	#5	BNT.	3'-10 1/2"

BAR LIST ONE JOINT REPAIR (PHASE II) (1 REQUIRED FOR BRIDGE)				
MARK	NO.	SIZE	FORM	LENGTH
EPOXY COATED				
D1	12	#5	STR.	13'-10"
D2	12	#5	STR.	5'-0"
D3	11	#5	STR.	3'-8"
D4	9	#5	BNT.	3'-10 1/2"

② LENGTH OF ANCHORAGE SYSTEM TO BE DETERMINED BY MANUFACTURER SPECIFICATIONS (SEE GENERAL NOTES)

QUANTITIES FOR CONSTRUCTION JOINT REPAIR (1 REQUIRED FOR BRIDGE)				
ITEM	UNIT	PHASE I	PHASE II	TOTAL
RAPID CURE JOINT SEALANT	L.F.	17.00	17.00	34.00
CLASS AA CONCRETE	C.Y.	1.10	1.10	2.20
EPOXY COATED REINFORCING STEEL	L.B.	320.00	320.00	640.00
SEALER CRACK PREPARATION	L.F.	32.00	36.00	68.00
SEALER RESIN	GAL.	0.30	0.30	0.60
(SP) CORROSION INHIBITOR (SURFACE APPLIED)	S.Y.	1.80	2.00	3.80

BRIDGE "B" SH-2 OVER FOURCHE MALINE CREEK	LATIMER COUNTY	Design	N/A	N/A
DETAILS OF CONSTRUCTION JOINT REHABILITATION AT PIER NO. 1 (BRIDGE "B")		Detail	MSW	5/17
		Check	RAH	6/17
		Squad	HENSLLEY	
		Engr.	DEFRANCO	